

For
SALE

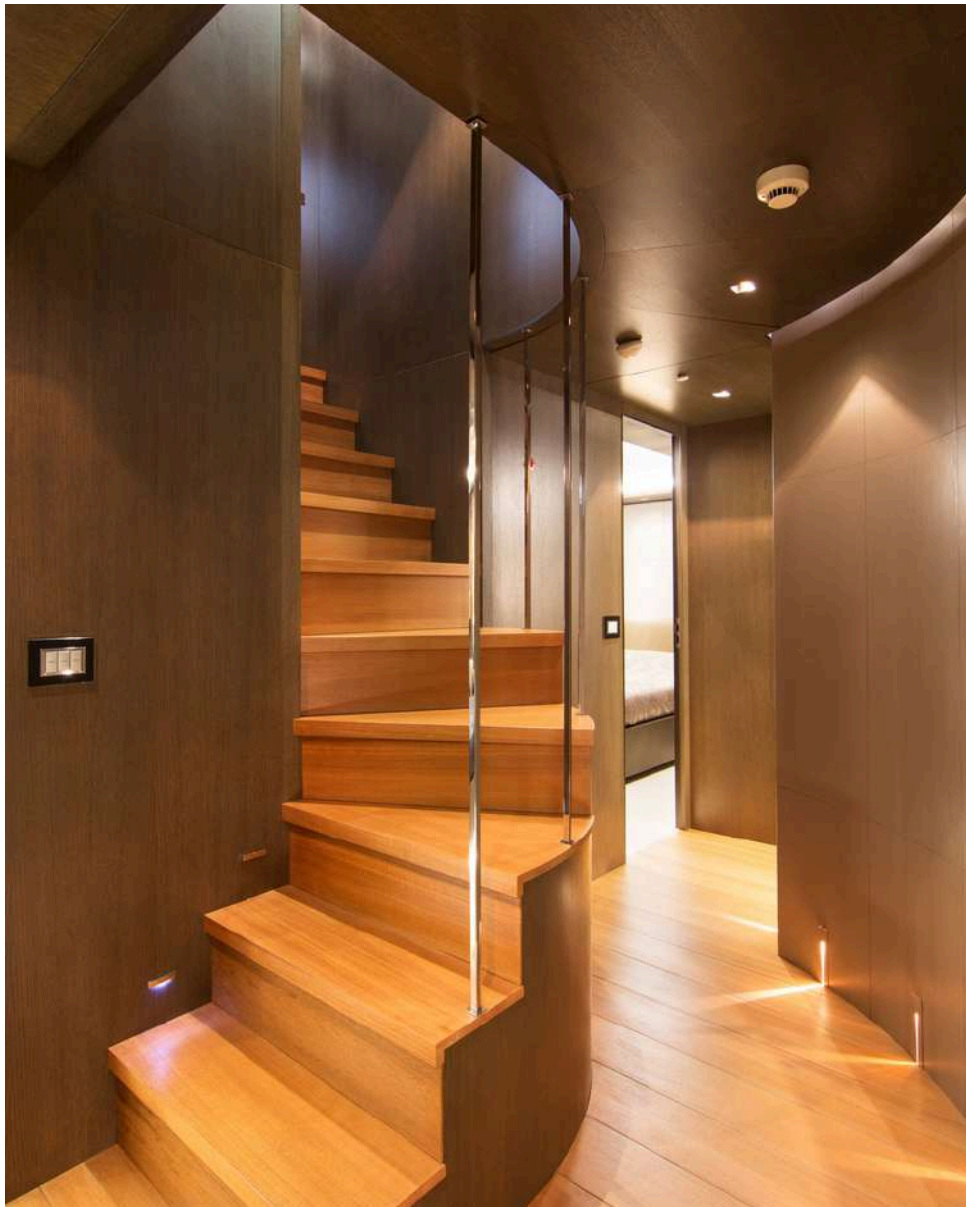
ADMIRAL
M/Y MADO

2009 / 2023

Designed for easy living, at speed



ESSENTIALS



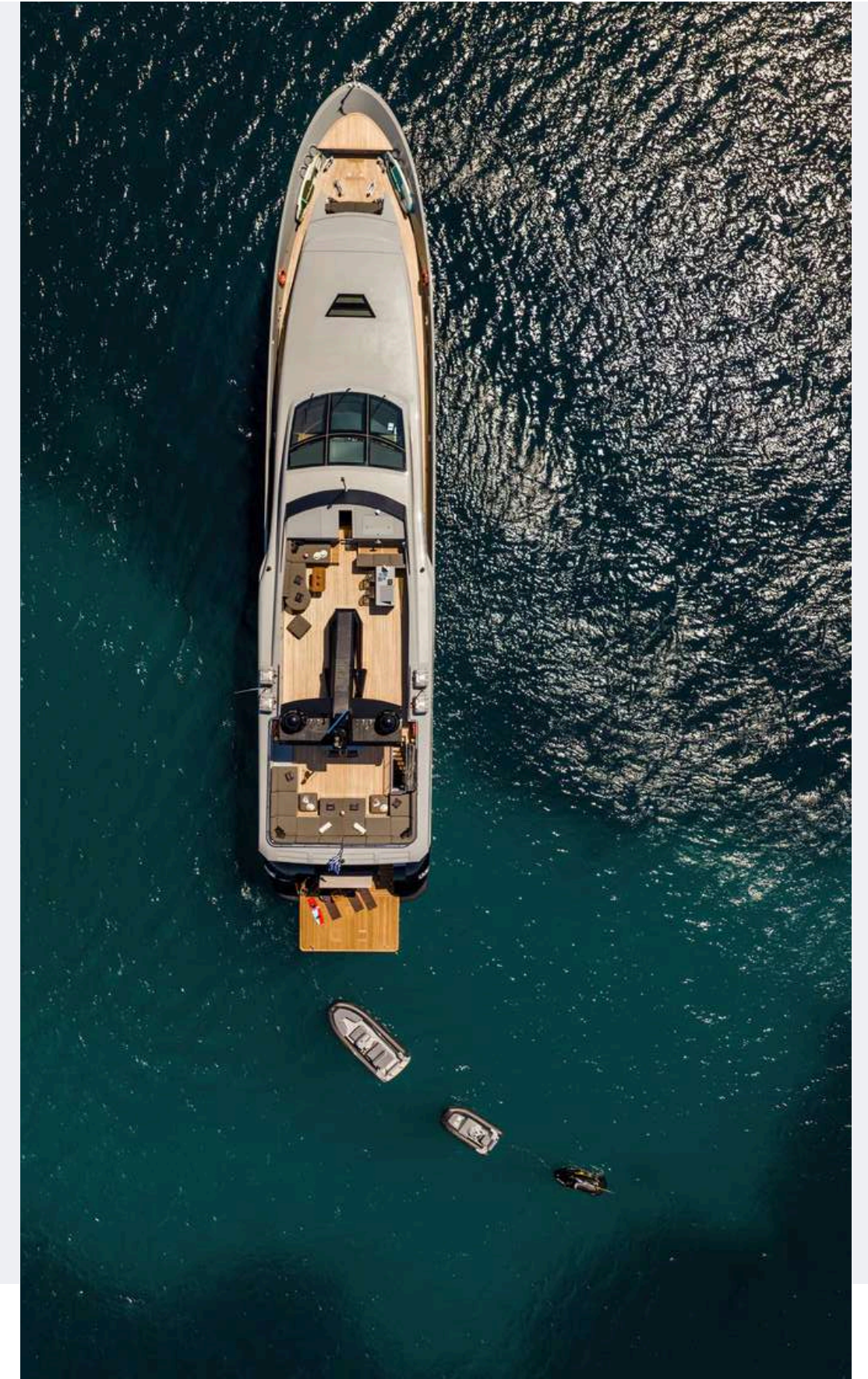
A 39m aluminium yacht combining speed and ease of use.

Refitted in 2023 and ready for immediate cruising.

- YEAR: 2009 / 2023
- LENGTH: 39.25 m
- BEAM: 8.00 m
- DRAFT: 1.80 m
- GUESTS: 11
- CABINS: 5 en-suite cabins
- MAX SPEED: 30 knots

Commercial details

- CURRENT LOCATION: Greece
- ASKING PRICE: €7,500,000
- VAT: Not Paid







M/Y MADO, A NATURAL WAY TO MOVE AT SEA

Built by Admiral and refitted in 2023, MADO is a 39-metre aluminium yacht designed with a clear focus on performance and usability.

Her exterior lines by Luca Dini present a clean and dynamic profile, while the layout remains structured and practical across all decks.

With accommodation for up to 11 guests, the yacht offers a configuration suited to both private cruising and charter use.

A STRAIGHTFORWARD AND WELL-BALANCED PLATFORM



- ★ MADO combines speed with a layout designed for practical, day-to-day use onboard.
- ★ Her configuration ensures a smooth flow between interior and exterior spaces, without unnecessary complexity.
- ★ The recent refit supports immediate use, both technically and cosmetically, without requiring further investment.
- ★ The overall balance of the yacht allows for flexible use, suited to both private cruising and charter operation.

A LAYOUT DESIGNED FOR OUTDOOR LIVING

Exterior areas are arranged for use throughout the day, from cruising to time at anchor.

The aft deck connects directly to the main salon, creating a natural continuity between interior and exterior spaces, while forward and upper deck areas provide additional seating and sunbathing options.

Circulation is simple and functional, supporting both social use and quieter moments onboard.

**MULTIPLE AREAS | CLEAR CIRCULATION |
FUNCTIONAL LAYOUT**







AN ELEVATED AND PRIVATE LEVEL

The sundeck provides a quieter setting with open views and a simple, flexible layout.



It can be used for sunbathing, informal dining or time at anchor, without overlapping with the main deck.







A BRIGHT AND OPEN MAIN SALON

The main salon benefits from large windows, bringing in natural light throughout the day.



The layout remains open and functional, with a direct connection to the aft deck.





A LAYOUT BUILT FOR FLEXIBLE GUEST USE

The yacht accommodates up to 11 guests across five cabins, including a master suite on the main deck.



The lower deck layout allows for flexible use, suited to both private cruising and charter.



A PRIVATE SPACE ON THE MAIN DECK

Located on the main deck, the master suite benefits from natural light and separation from the guest areas.



Its position allows for both privacy and direct access to the main living spaces.



A DIRECT CONNECTION TO THE SEA

The aft platform creates a dedicated space close to the water, used for both relaxation and water activities.



When deployed, it extends the usable area onboard and reinforces the connection with the sea.







SPECIFICATIONS

BUILDER: **Admiral**

EXTERIOR DESIGN: **Luca Dini Design**

YEAR: **2009 / 2023**

LENGTH OVERALL: **39.25m (128'9")**

BEAM: **8.00m**

DRAFT: **1.80m**

GROSS TONNAGE: **297 GT**

HULL: **Aluminium**

ENGINES: **2 x MTU 16V 4000 M90**

MAX SPEED: **30 knots**

CRUISING SPEED: **26 knots**

RANGE: **1,000 nm**

GUESTS: **11**

CABINS: **5** (Master, 3 Double, 1 Twin + Pullman)

CREW: **8**

CLASSIFICATION: **RINA**





ASKING PRICE

€ 7,500,000

VAT not paid
Visible in Greece

The particulars are believed to be correct but are not guaranteed and may not be used for contractual purposes. Specifications are provided for information only.


Contact Us

Michela
VILLA



 michela@villayachting.com

 www.villayachting.com

 +39 339 534 6067

 Via Roccatagliata Ceccardi 2/7
16121 Genova, Italy

